

Cornell University

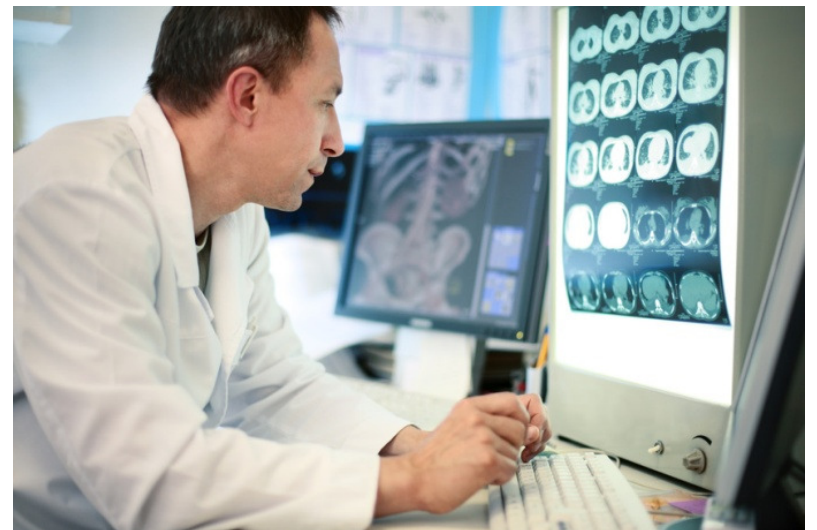
Edge Mashups for Clinical Collaboration

Michael Siegenthaler
Ken Birman



Edge Mashups for Clinical Collaboration

- **Platform objective:** empower **non-programmers** to build applications for **real-time collaboration**
- **Research challenges:** share information in a **federated environment** while providing accountability through HIPAA compliant **access logging** and data retention



Example use-cases

- Expert-assisted surgery
 - Can call a remote expert for advice if complications arise
- Micro-clinics
 - Nurses present on-site
 - Doctors write prescriptions remotely
 - Improved decision making before sending patient to a specialist

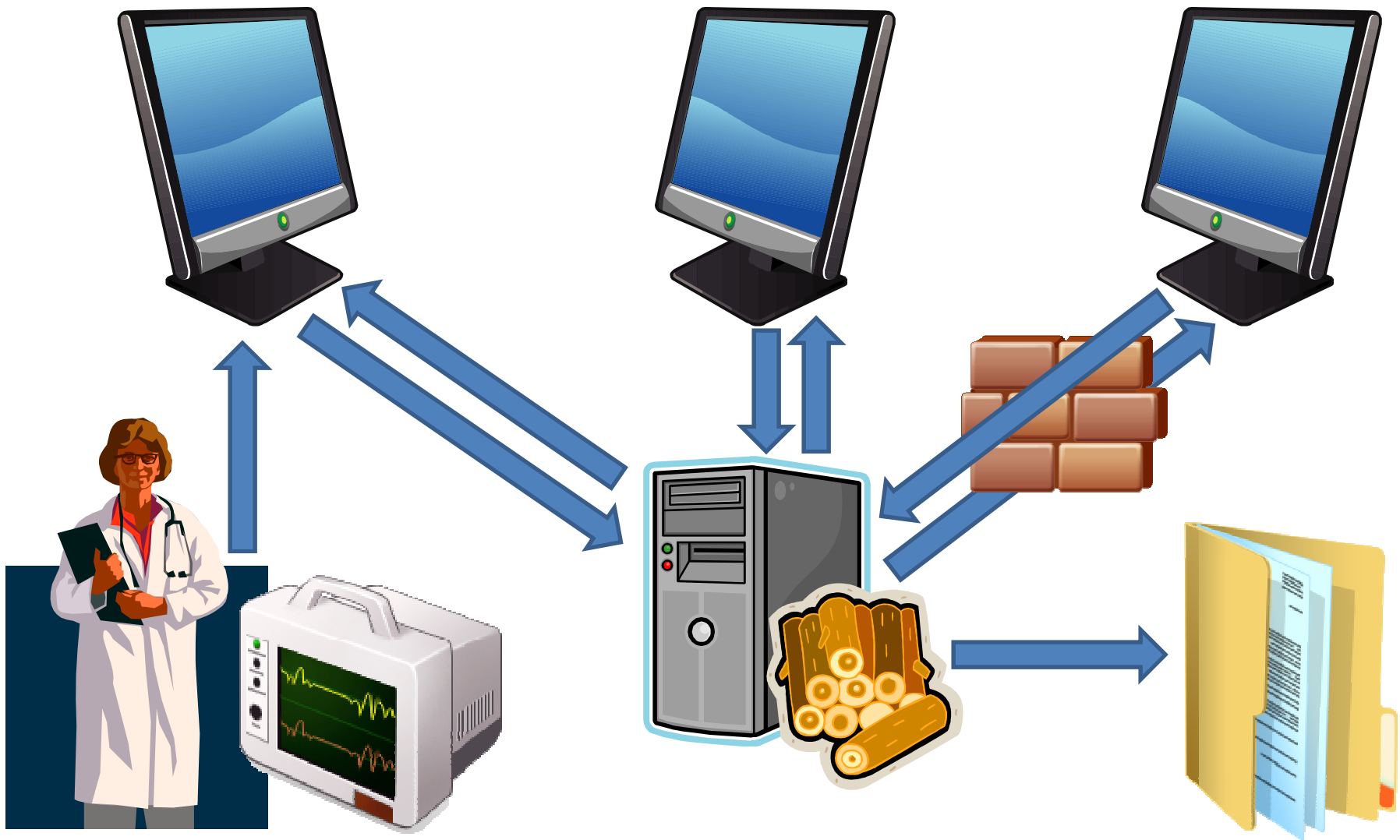


CollaborationWindow

Medication	Prescribed	...
Chloroquine	10/12/2009	
Acetaminophen	12/6/2008	
Quinine	3/14/2006	



Architectural Overview



Platform Capabilities



- Data privacy and auditability
 - Break-the-glass access control
 - Log appropriate checkpoints of application state
- Low latency to maintain interactive look and feel
 - Simultaneous updates from multiple workstations, while keeping views consistent enough for auditability
- Hosting medical applications in the cloud
 - Generic server to facilitate arbitrary applications
 - Move application logic dynamically between the workstations and the cloud
 - Scale to large deployments